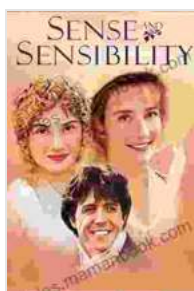


Sense and Sensibility: An Annotated Journey Through Jane Austen's Masterpiece

Sense and Sensibility is a novel by Jane Austen, first published in 1811. It is a coming-of-age story that follows the Dashwood sisters, Elinor and Marianne, as they navigate the complexities of love, marriage, and family in Regency England.

The novel is known for its insightful and witty portrayal of human nature, as well as its exploration of the themes of love, duty, and self-sacrifice. It is considered one of Austen's most beloved and enduring works.



Sense and Sensibility Annotated by Julio Verne

★★★★☆ 4 out of 5

Language	: English
File size	: 1121 KB
Text-to-Speech	: Enabled
Screen Reader	: Supported
Enhanced typesetting	: Enabled
Word Wise	: Enabled
Print length	: 394 pages
Lending	: Enabled
Paperback	: 80 pages
Item Weight	: 3.2 ounces
Dimensions	: 5.1 x 0.3 x 7.6 inches



Plot Summary

Sense and Sensibility begins with the death of Mr. Dashwood, leaving his widow and three daughters, Elinor, Marianne, and Margaret, in reduced

circumstances. The family is forced to leave their ancestral home, Norland Park, and move to a small cottage on the estate of their wealthy cousin, Sir John Middleton.

Elinor, the eldest daughter, is a sensible and practical young woman who tries to hide her emotions. Marianne, the second daughter, is a passionate and romantic young woman who wears her heart on her sleeve.

The two sisters fall in love with different men. Elinor falls in love with Edward Ferrars, a quiet and reserved young man who is secretly engaged to Lucy Steele. Marianne falls in love with Willoughby, a charming and handsome young man who turns out to be a heartless cad.

Through a series of misunderstandings and miscommunications, Elinor and Marianne both suffer heartbreak. However, they eventually find happiness with men who are worthy of their love.

Characters

Elinor Dashwood

Elinor is the eldest Dashwood sister. She is a sensible and practical young woman who tries to hide her emotions. She is often seen as the more mature and responsible of the two sisters.

Elinor is in love with Edward Ferrars, but she is unaware of his secret engagement to Lucy Steele. She eventually marries Edward after his engagement to Lucy is broken.

Marianne Dashwood

Marianne is the second Dashwood sister. She is a passionate and romantic young woman who wears her heart on her sleeve. She is often seen as the more emotional and impulsive of the two sisters.

Marianne falls in love with Willoughby, but she is unaware of his true nature. She eventually marries Colonel Brandon after Willoughby jilts her.

Edward Ferrars

Edward Ferrars is a quiet and reserved young man. He is in love with Elinor, but he is secretly engaged to Lucy Steele. He eventually breaks his engagement to Lucy and marries Elinor.

Willoughby

Willoughby is a charming and handsome young man. He falls in love with Marianne, but he is not truly in love with her. He eventually jilts her and marries a wealthy woman.

Colonel Brandon

Colonel Brandon is a wealthy and respectable older gentleman. He falls in love with Marianne after Willoughby jilts her. He eventually marries Marianne.

Themes

Love and marriage

Sense and Sensibility explores the different ways that people experience love and marriage. Elinor and Marianne represent two extremes: Elinor is sensible and practical, while Marianne is passionate and romantic.

The novel shows that there is no one right way to love or to be married. However, it does suggest that it is important to find a partner who is compatible with you.

Duty and self-sacrifice

Sense and Sensibility also explores the themes of duty and self-sacrifice. Elinor is often forced to sacrifice her own happiness for the sake of her family.

The novel shows that it is important to be willing to make sacrifices for the people you love. However, it also shows that it is important to know your limits and to not sacrifice yourself to the point of unhappiness.

Literary Significance

Sense and Sensibility is considered one of Jane Austen's most beloved and enduring works. It is a well-written and insightful novel that explores the complexities of love, marriage, and family.

The novel has been praised for its realistic characters, its witty dialogue, and its exploration of universal themes.

Adaptations

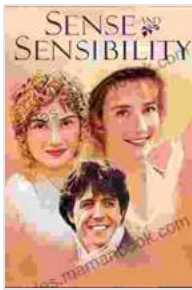
Sense and Sensibility has been adapted into several films and television series. The most notable adaptations include:

- *Sense and Sensibility* (1995), a film directed by Ang Lee and starring Emma Thompson, Kate Winslet, and Hugh Grant.

- *Sense and Sensibility* (2008), a television series directed by John Alexander and starring Hattie Morahan, Charity Wakefield, and David Morrissey.

Further Reading

- *Sense and Sensibility* on Encyclopedia Britannica
- *Sense and Sensibility* on GradeSaver
- *Sense and Sensibility* on LitCharts



Sense and Sensibility Annotated by Julio Verne

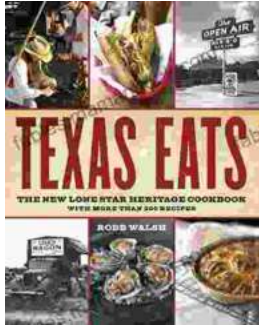
★★★★☆ 4 out of 5

Language	: English
File size	: 1121 KB
Text-to-Speech	: Enabled
Screen Reader	: Supported
Enhanced typesetting	: Enabled
Word Wise	: Enabled
Print length	: 394 pages
Lending	: Enabled
Paperback	: 80 pages
Item Weight	: 3.2 ounces
Dimensions	: 5.1 x 0.3 x 7.6 inches

FREE

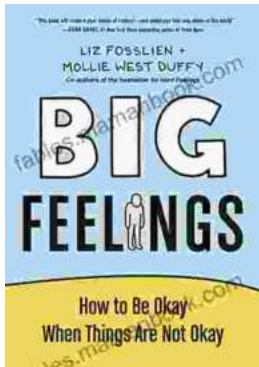
DOWNLOAD E-BOOK





Discover the Culinary Treasures of Texas: The Lone Star Heritage Cookbook with Over 200 Delectable Recipes

Exploring the Flavors of the Lone Star State Embark on a culinary journey through the vast and diverse landscapes of Texas with The Lone Star Heritage Cookbook, an...



How To Be Okay When Things Are Not Okay: A Comprehensive Guide

Life is full of ups and downs. There will be times when everything seems to be going your way, and there will be times when it feels like the whole...