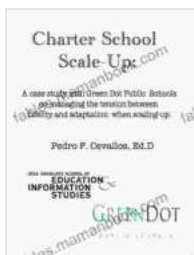


Charter School Scale Up: Managing Fidelity and Adaptation

Charter schools are public schools that are independently operated and receive public funding. They are often created to provide parents with more choice in their children's education and to promote innovation in educational practices.



Charter School Scale-Up: Managing Fidelity and Adaptation by Erin Shields

★★★★☆ 4.7 out of 5

Language : English
File size : 351 KB
Text-to-Speech : Enabled
Screen Reader : Supported
Enhanced typesetting : Enabled
Word Wise : Enabled
Print length : 146 pages
Lending : Enabled



Charter schools have been growing in popularity in recent years. In the 2018-2019 school year, there were over 7,000 charter schools operating in the United States, serving over 3 million students.

As charter schools continue to grow, there is increasing interest in scaling up successful models. However, scaling up charter schools is a complex process that involves managing fidelity and adaptation.

Challenges of Charter School Scale Up

There are a number of challenges involved in scaling up charter schools. These challenges include:

- **Maintaining fidelity to the original model.** When a charter school is scaled up, it is important to maintain fidelity to the original model. This means ensuring that the school's mission, vision, and educational practices are consistent with the original school.
- **Adapting to the needs of new communities.** When a charter school is scaled up to new communities, it is important to adapt the school's model to the needs of those communities. This may involve making changes to the school's curriculum, staffing, and governance.
- **Managing the growth of the organization.** As a charter school scales up, it is important to manage the growth of the organization. This may involve hiring new staff, developing new systems and procedures, and raising additional funding.

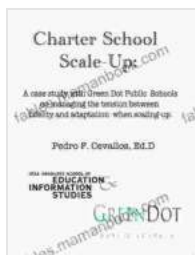
Strategies for Managing Fidelity and Adaptation

There are a number of strategies that can be used to manage fidelity and adaptation when scaling up charter schools. These strategies include:

- **Developing a clear and concise mission, vision, and set of educational practices.** This will help to ensure that all stakeholders are clear on the school's purpose and goals.
- **Creating a strong leadership team.** The leadership team will be responsible for ensuring that the school's mission, vision, and educational practices are implemented with fidelity.

- **Establishing a system for monitoring fidelity.** This system will help to ensure that the school is staying true to its original model.
- **Involving stakeholders in the adaptation process.** This will help to ensure that the school's model is adapted to the needs of the new communities it serves.

Charter school scale up is a complex process that involves managing fidelity and adaptation. However, by following the strategies outlined in this article, charter schools can successfully scale up and continue to provide high-quality educational opportunities for students.

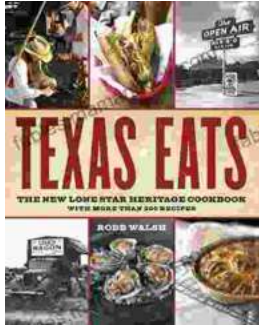


Charter School Scale-Up: Managing Fidelity and Adaptation by Erin Shields

★★★★☆ 4.7 out of 5

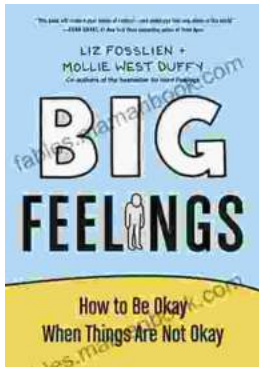
Language	: English
File size	: 351 KB
Text-to-Speech	: Enabled
Screen Reader	: Supported
Enhanced typesetting	: Enabled
Word Wise	: Enabled
Print length	: 146 pages
Lending	: Enabled





Discover the Culinary Treasures of Texas: The Lone Star Heritage Cookbook with Over 200 Delectable Recipes

Exploring the Flavors of the Lone Star State Embark on a culinary journey through the vast and diverse landscapes of Texas with The Lone Star Heritage Cookbook, an...



How To Be Okay When Things Are Not Okay: A Comprehensive Guide

Life is full of ups and downs. There will be times when everything seems to be going your way, and there will be times when it feels like the whole...